

# Installing EasyPal-Hybrid mode for the first time

First you need to download the latest version of EasyPal (EasyPal-07-OCT-2014)

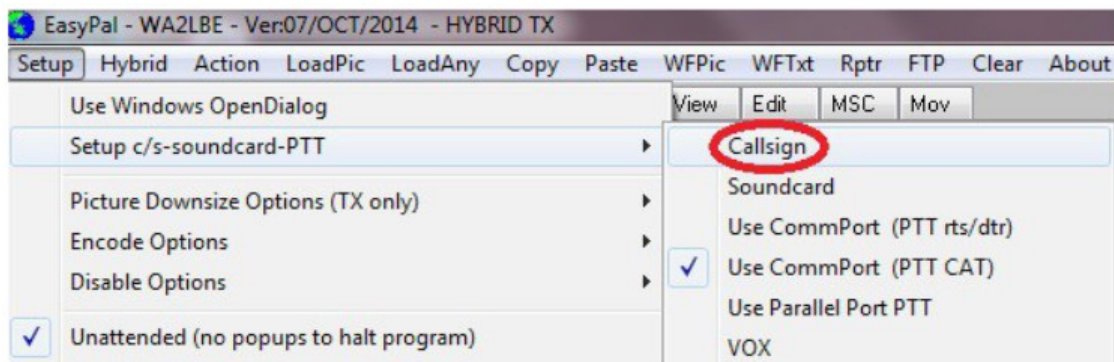
Start the install of EasyPal, some users that have had problems with EasyPal, have changed the install folder from the standard install default C:\Program Files\EasyPal to C:\EasyPal The choice is yours. When you have the program fully installed and before you run EasyPal is is best to plug something into your sound card.

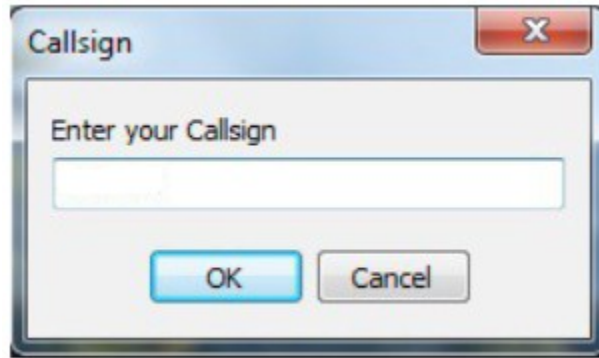


**Some systems will give you a error like above, if nothing plugged in.**

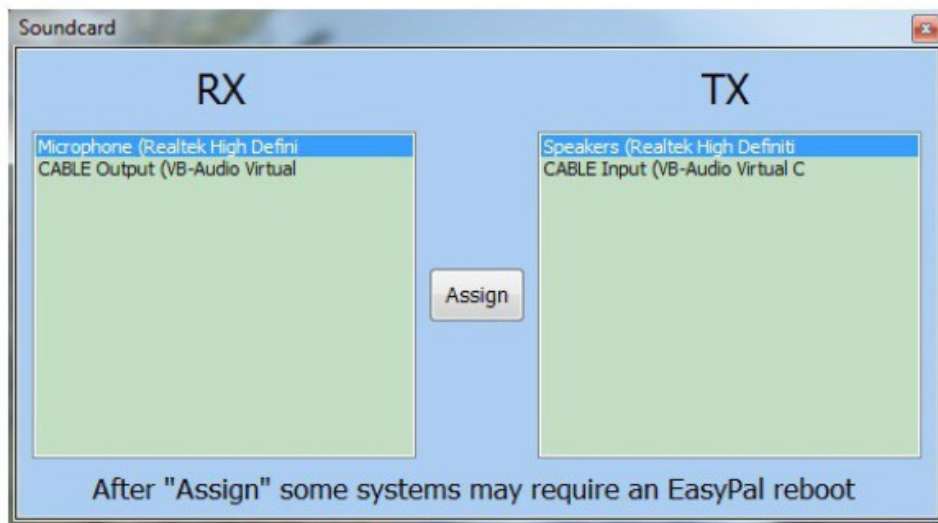
Hybrid mode is a way of sending a file is much quicker but you are not receiving the image via the radio, you are only receiving a short header that tells EasyPal where to go and download the file and display it on your screen, This all goes on within the program. The sending station uploads, "FTP", a file to a server then transmits its location and your program grabs it via the internet and displays it. This means you MUST have an internet connection.

Now lets do some basic settings, from the top menu bar click on "Setup" and move mouse over "Setup c/s soundcard-PTT" and move over to "Callsign" and click, Now enter your callsign and click OK.

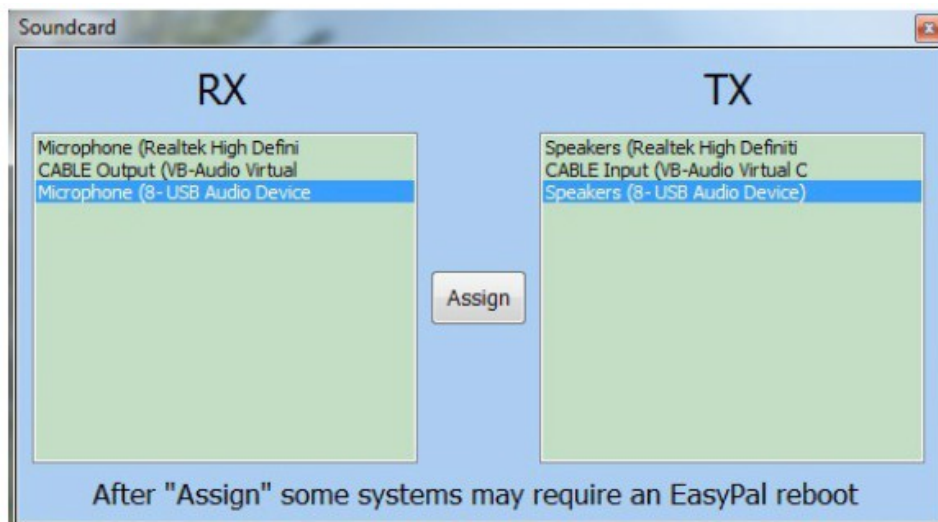




Now do the same again but this time click on "Soundcard". Here you will have a RX and TX list of sound devices, you just highlight the sound devices that you will be using and click "Assign"



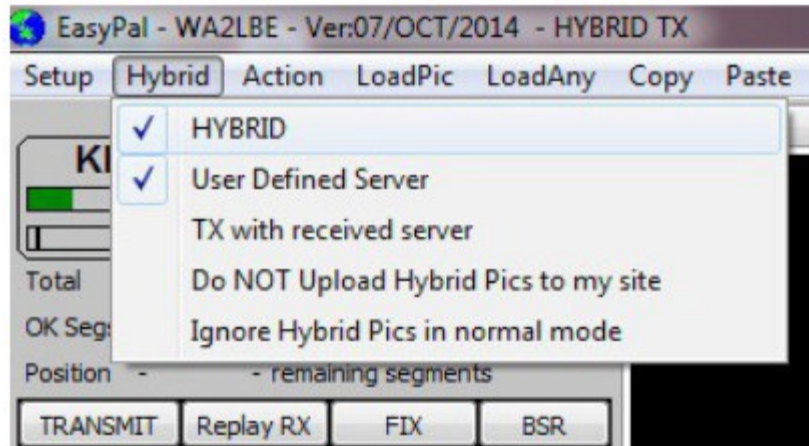
**Here I have selected the computer's default mic and speakers**



**Here I have selected the USB devices**

Now you need to setup how you want the software to key your radio, this all depends on what sort of interface you are using. Most simple interfaces will use "Commport (PTT rts/dtr)" There are so many variations in doing your PTT, that we cannot go into this here. You will have to work out what is needed for your interface.

To send images in Hybrid mode all you need to do is click on "Hybrid" in the top menu and put a check next to Hybrid.



If you plan on "User Defined Server", enter the following:

Web Address: [qsl.net/](http://qsl.net/)(your callsign)

User Name: (your callsign)

Password: (the one sent to you – CASE SENSITIVE)

A screenshot of the "User Defined Server" configuration dialog box. It contains four input fields: "Web Address", "User Name", "Password", and "Special Web Directory". Below the fields are two buttons: "USE" and "DO NOT USE". The "Special Web Directory" field has a note: "LEAVE BLANK !! unless special Server requirements".

Click USE

You need a web server address for EasyPal to FTP your pictures to.

Go to [QSL.net](http://QSL.net)



# QSL.NET

Connecting Hams Around The World

[Home](#) [About](#) [Contact](#) [Search QSL.NET](#) [Login](#)

[Donate](#)

- [Make a Donation](#)
- [The Help Page](#)
- [Sign Up for a Website or Email Address](#)
- [DX'ers This is for you!](#)
- [EMail Mailing Lists](#)
- [Latest System News](#)
- [Acceptable Use and Privacy Policy](#)

[View All Banners](#) [Advertise Here](#)

Please read the "[Latest System News](#)" for important news about SSL! (updated September 10, 2018)

QSL.net is dedicated to the sole purpose of furthering the abilities and interest of the Amateur Radio Community. If you are a licensed Amateur Radio Operator you are invited to reserve your free space on this server.

[Sign Up](#) and you will receive a free @qsl.net e-mail address that forwards to your existing e-mail account, along with free web server space to either move your homepage to this server, mirror your existing one, or lose all those excuses and finally START one.

You may also be interested in joining one of over 600 amateur radio mailing lists... or even starting your own e-mail mailing list... utilizing our Mailman mailing list server. See <http://mailman.qth.net> for more information.

For DX'ers, take a look at [DX.QSL.NET](#), managed by N6RT. You can search through over 2000 DX logs from over 100 different countries, using our powerful log search engine. You can also view a large collection of dynamic propagation information and reports, including our new Tropo Ducting Reports. And you may wish to spend some time with the #CQDX Chat service, where you can chat with other DXers and view real-time spots from DX Summit.

Tell your fellow Hams about our free services. Spread the word, encourage this site to all Amateur Radio Operators -- the more the better.

If you have any questions, feel free to contact us.

QSL.NET is funded by YOUR [contributions](#). Thanks for the support!

[Donate](#)

We need your support!

Click on sign Up



# QSL.NET

Connecting Hams Around The World

[Home](#) [About](#) [Contact](#) [Search QSL.NET](#) [Login](#)

[Donate](#)

- [Make a Donation](#)
- [The Help Page](#)
- [Sign Up for a Website or Email Address](#)
- [DX'ers This is for you!](#)
- [EMail Mailing Lists](#)
- [Latest System News](#)
- [Acceptable Use and Privacy Policy](#)

## Sign Up for Free QSL.net Services

**NOTE:** This is for NEW sign-ups only. If you have EXISTING Web and Email services, but need to make a change, please use our [Self-Help System \(Login Required\)](#).

These services are provided at NO COST to amateur radio operators and organizations, although **donations are encouraged** and very much appreciated (and needed). See our [donation page](#) for more information on how to make a donation.

**Step 1**

**Please choose the service you would like set up for you:**

**Email Forwarding Only** *We will create an e-mail address in the format of [callsign@qsl.net](mailto:callsign@qsl.net). Any mail sent to this address will be automatically forwarded to the e-mail address you specified above.*


**Website plus E-Mail Forwarding** *We will create an e-mail forwarding address as explained above, plus we will create a website in the format of <https://www.qsl.net/callsign>. You will be given a username and password so you can use FTP software to upload your HTML web pages and other files -- no PHP or other scripting languages and/or database access is available. If you require PHP, MySQL Databases, etc., we suggest applying for hosting service at [QTH.com](http://QTH.com). If you sign-up for a Website account, you will automatically receive an email forwarding address. If you really do not want an email forwarding address, you can use our Self-Help System to disable it.*

**Mailman Mailing List** *We will create an e-mail Mailing List, using the Mailman software. You can choose the name of the list, and it will have an e-mail address of [nameoflist@mailman.qth.net](mailto:nameoflist@mailman.qth.net). You will need to assign a mailing list administrator to deal with the day-to-day support requests and maintenance of the list. You can read more about the roles and responsibilities of a list owner [here](#) (will open a new window). A [donation to QSL.net](#) of \$25 per year per mailing list is suggested.*

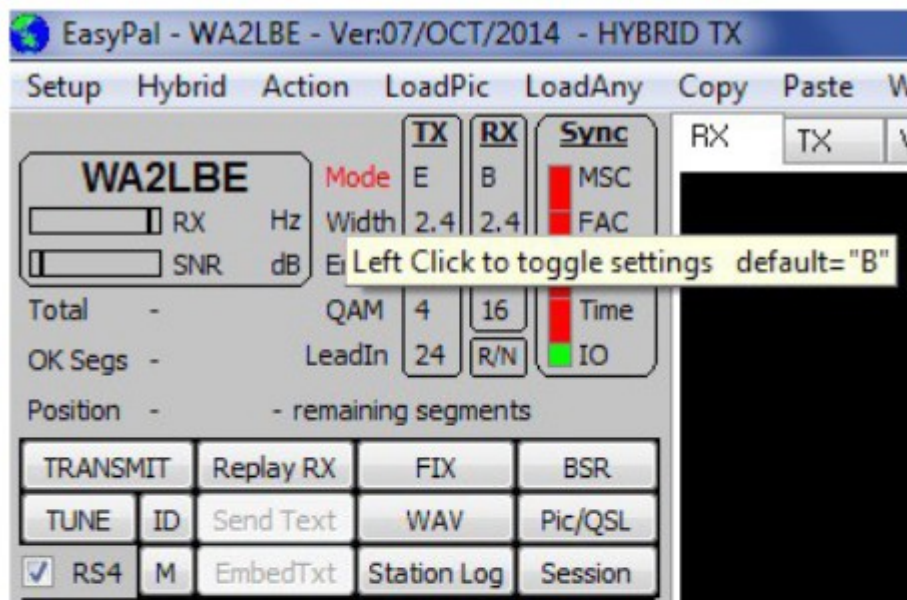
QSL.NET is funded by YOUR [contributions](#). Thanks for the support!

[Donate](#)

We need your support!

While your waiting for the email, you can click on “TX with received server”

Setting the Control for Tx. It is not obvious at first, but many of the adjustable parameters change by “left” clicking the mouse on the name. For example in the lower left corner is a check mark box and RS2. You might find this set to RS1,2,3 or RS4. You change this value by left clicking the RS text.



### The settings for Saturday Night DSSTV:

**Mode – E**  
**Width – 2.4**  
**ErrFix – HI**  
**QAM – 4**  
**LeadIn – 24**  
**RS – 4 (with check mark)**

I hope this has not confused you too much and I hope it has been of some help to you. The best of help you will find on air, so just ask for help. Ham radio is full of experts !!!